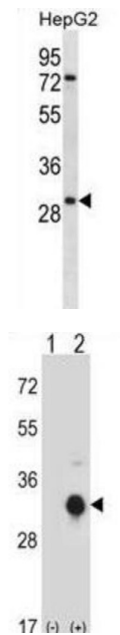


Datasheet

Version: 1.0.0
Revision date: 28 Jan 2025

Kallikrein 10 (KLK10) Antibody

Catalogue No.: abx028139



Kallikreins are a subgroup of serine proteases having diverse physiological functions. Growing evidence suggests that many kallikreins are implicated in carcinogenesis and some have potential as novel cancer and other disease biomarkers. This gene is one of the fifteen kallikrein subfamily members located in a cluster on chromosome 19. Its encoded protein is secreted and may play a role in suppression of tumorigenesis in breast and prostate cancers. Alternate splicing of this gene results in multiple transcript variants encoding the same protein. [provided by RefSeq].

Target: Kallikrein 10 (KLK10)

Clonality: Polyclonal

Reactivity: Human

Tested Applications: ELISA, WB

Host: Rabbit

Recommended dilutions: WB: 1/1000. Optimal dilutions/concentrations should be determined by the end user.

Conjugation: Unconjugated

Immunogen: KLH-conjugated synthetic peptide between 22-51 amino acids from the N-terminal region of human KLK10.

Isotype: IgG

Datasheet

Version: 1.0.0
Revision date: 28 Jan 2025



Form:	Liquid
Purification:	Purified through a protein A column, followed by peptide affinity purification.
Storage:	Aliquot and store at -20°C. Avoid repeated freeze/thaw cycles.
UniProt Primary AC:	O43240 (UniProt , ExPASy)
Gene Symbol:	KLK10
KEGG:	hsa:5655
String:	9606.ENSP00000311746
Molecular Weight:	Calculated MW: 30.2 kDa
Buffer:	PBS containing 0.09% sodium azide.
Note:	This product is for research use only.

For Reference Only