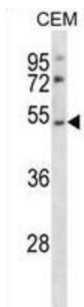


## P2Y Purinoceptor 2 (P2RY2) Antibody

Catalogue No.: abx028265



The product of this gene belongs to the family of G-protein coupled receptors. This family has several receptor subtypes with different pharmacological selectivity, which overlaps in some cases, for various adenosine and uridine nucleotides. This receptor is responsive to both adenosine and uridine nucleotides. It may participate in control of the cell cycle of endometrial carcinoma cells. Three transcript variants encoding the same protein have been identified for this gene.

**Target:** P2Y Purinoceptor 2 (P2RY2)

**Clonality:** Polyclonal

**Reactivity:** Human

**Tested Applications:** ELISA, WB

**Host:** Rabbit

**Recommended dilutions:** WB: 1/1000. Optimal dilutions/concentrations should be determined by the end user.

**Conjugation:** Unconjugated

**Immunogen:** KLH-conjugated synthetic peptide between 324-352 amino acids from the C-terminal region of human P2RY2.

**Isotype:** IgG

**Form:** Liquid

**Purification:** Purified through a protein A column, followed by peptide affinity purification.

**Storage:** Aliquot and store at -20°C. Avoid repeated freeze/thaw cycles.

**UniProt Primary AC:** P41231 ([UniProt](#), [ExPASy](#))

**Gene Symbol:** P2RY2

# Datasheet

Version: 2.0.0  
Revision date: 29 Dec 2024



**KEGG:** hsa:5029

**String:** [9606.ENSP00000310305](#)

**Molecular Weight:** Calculated MW: 42.3 kDa

**Buffer:** PBS containing 0.09% sodium azide.

**Note:** This product is for research use only.

For Reference Only