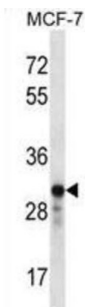


GRB2 Related Adaptor Protein 2 (GRAP2) Antibody

Catalogue No.: abx028269



This gene encodes a member of the GRB2/Sem5/Drk family. This member is an adaptor-like protein involved in leukocyte-specific protein-tyrosine kinase signaling. Like its related family member, GRB2-related adaptor protein (GRAP), this protein contains an SH2 domain flanked by two SH3 domains. This protein interacts with other proteins, such as GRB2-associated binding protein 1 (GAB1) and the SLP-76 leukocyte protein (LCP2), through its SH3 domains. Transcript variants utilizing alternative polyA sites exist.

Target:	GRB2 Related Adaptor Protein 2 (GRAP2)
Clonality:	Polyclonal
Reactivity:	Human
Tested Applications:	ELISA, WB
Host:	Rabbit
Recommended dilutions:	WB: 1/1000. Optimal dilutions/concentrations should be determined by the end user.
Conjugation:	Unconjugated
Immunogen:	KLH-conjugated synthetic peptide between 131-159 amino acids from the Central region of human GRAP2.
Isotype:	IgG
Form:	Liquid
Purification:	Purified through a protein A column, followed by peptide affinity purification.
Storage:	Aliquot and store at -20°C. Avoid repeated freeze/thaw cycles.
UniProt Primary AC:	O75791 (UniProt , ExpASY)

Datasheet

Version: 2.0.0
Revision date: 03 Sep 2024



Gene Symbol: GRAP2

KEGG: hsa:9402

String: [9606.ENSP00000339186](#)

Molecular Weight: Calculated MW: 37.9 kDa

Buffer: PBS containing 0.09% sodium azide.

Note: This product is for research use only.

For Reference Only