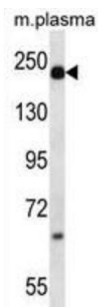


Alpha-2-Macroglobulin (A2M) Antibody

Catalogue No.: abx028308



Alpha-2-macroglobulin is a protease inhibitor and cytokine transporter. It inhibits many proteases, including trypsin, thrombin and collagenase. A2M is implicated in Alzheimer disease (AD) due to its ability to mediate the clearance and degradation of A-beta, the major component of beta-amyloid deposits. [provided by RefSeq].

Target: Alpha-2-Macroglobulin (A2M)

Clonality: Polyclonal

Reactivity: Human

Tested Applications: ELISA, WB

Host: Rabbit

Recommended dilutions: WB: 1/1000. Optimal dilutions/concentrations should be determined by the end user.

Conjugation: Unconjugated

Immunogen: KLH-conjugated synthetic peptide between 93-120 amino acids from the N-terminal region of human A2M.

Isotype: IgG

Form: Liquid

Purification: Purified through a protein A column, followed by peptide affinity purification.

Storage: Aliquot and store at -20°C. Avoid repeated freeze/thaw cycles.

UniProt Primary AC: P01023 ([UniProt](#), [ExPASy](#))

Gene Symbol: A2M

Datasheet

Version: 1.0.0
Revision date: 23 Feb 2025



KEGG: hsa:2

String: [9606.ENSP00000323929](#)

Molecular Weight: Calculated MW: 163 kDa

Buffer: PBS containing 0.09% sodium azide.

Specificity: Predicted to react with Cow A2M.

Note: This product is for research use only.

For Reference Only