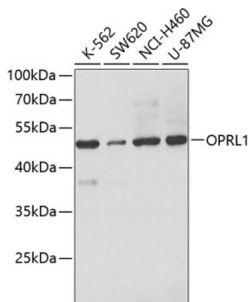


Nociceptin Receptor (OPRL1) Antibody

Catalogue No.: abx002236



Western blot analysis of extracts of various cell lines, using OPRL1 antibody (1/500 dilution).

OPRL1 Antibody is a Rabbit Polyclonal antibody against OPRL1. The protein encoded by this gene is a G protein-coupled receptor whose expression can be induced by phytohemagglutinin. The encoded integral membrane protein is a receptor for the 17 aa neuropeptide nociceptin/orphanin FQ. This gene may be involved in the regulation of numerous brain activities, particularly instinctive and emotional behaviors. A promoter for this gene also functions as a promoter for another gene, regulator of G-protein signalling 19 (RGS19), located on the opposite strand. Three transcript variants encoding the same protein have been found for this gene.

Target:	Nociceptin Receptor (OPRL1)
Clonality:	Polyclonal
Reactivity:	Human
Tested Applications:	WB
Host:	Rabbit
Recommended dilutions:	WB: 1/500 - 1/2000. Optimal dilutions/concentrations should be determined by the end user.
Conjugation:	Unconjugated
Immunogen:	A synthetic peptide corresponding to a sequence within amino acids 270-370 of human OPRL1
Isotype:	IgG
Form:	Liquid
Purification:	Purified by affinity chromatography.
Storage:	Aliquot and store at -20°C. Avoid repeated freeze/thaw cycles.
UniProt Primary AC:	P41146 (UniProt , ExPASy)

Datasheet

Version: 4.0.0
Revision date: 14 Jan 2025



Gene Symbol: OPRL1

GeneID: [4987](#)

NCBI Accession: NP_000904.1

KEGG: hsa:4987

String: [9606.ENSP00000336764](#)

Molecular Weight: Calculated MW: 41 kDa
Observed MW: 50 kDa

Buffer: PBS, pH 7.3, containing 0.02% sodium azide, 50% glycerol.

Concentration: 0.63 mg/ml

Note: This product is for research use only.

For Reference Only