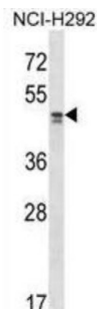


Transcriptional Adaptor 2A (TADA2L) Antibody

Catalogue No.: abx028411



Many DNA-binding transcriptional activator proteins enhance the initiation rate of RNA polymerase II-mediated gene transcription by interacting functionally with the general transcription machinery bound at the basal promoter. Adaptor proteins are usually required for this activation, possibly to acetylate and destabilize nucleosomes, thereby relieving chromatin constraints at the promoter. The protein encoded by this gene is a transcriptional activator adaptor and has been found to be part of the PCAF histone acetylase complex. Several alternatively spliced transcript variants encoding different isoforms of this gene have been described, but the full-length nature of some of these variants has not been determined.

Target:	Transcriptional Adaptor 2A (TADA2L)
Clonality:	Polyclonal
Reactivity:	Human
Tested Applications:	ELISA, WB
Host:	Rabbit
Recommended dilutions:	WB: 1/1000. Optimal dilutions/concentrations should be determined by the end user.
Conjugation:	Unconjugated
Immunogen:	KLH-conjugated synthetic peptide between 202-230 amino acids from the Central region of human TADA2L.
Isotype:	IgG
Form:	Liquid
Purification:	Purified through a protein A column, followed by peptide affinity purification.
Storage:	Aliquot and store at -20°C. Avoid repeated freeze/thaw cycles.
UniProt Primary AC:	O75478 (UniProt , ExpASY)

Datasheet

Version: 4.0.0
Revision date: 04 Dec 2024



Gene Symbol: TADA2A

KEGG: hsa:6871

String: [9606.ENSP00000481091](#)

Molecular Weight: Calculated MW: 51.5 kDa

Buffer: PBS containing 0.09% sodium azide.

Specificity: Predicted to react with Mouse, Rat and Cow TADA2A.

Note: This product is for research use only.

For Reference Only