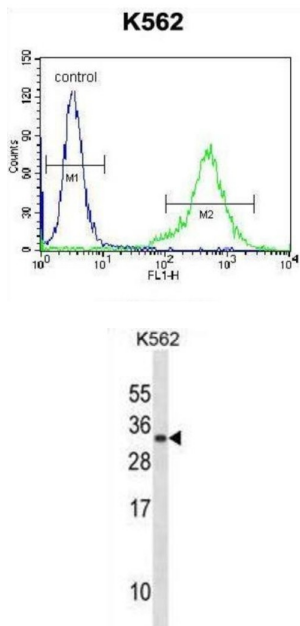


Prolactin (PRL) Antibody

Catalogue No.: abx028414



Prolactin acts primarily on the mammary gland by promoting lactation.

| | |
|-------------------------------|---|
| Target: | Prolactin (PRL) |
| Clonality: | Polyclonal |
| Reactivity: | Human |
| Tested Applications: | ELISA, WB, FCM |
| Host: | Rabbit |
| Recommended dilutions: | WB: 1/1000, FCM: 1/10 - 1/50. Optimal dilutions/concentrations should be determined by the end user. |
| Conjugation: | Unconjugated |
| Immunogen: | KLH-conjugated synthetic peptide between 188-216 amino acids from the C-terminal region of human PRL. |
| Isotype: | IgG |
| Form: | Liquid |
| Purification: | Purified through a protein A column, followed by peptide affinity purification. |

Datasheet

Version: 1.0.0
Revision date: 19 Jan 2025



Storage: Aliquot and store at -20°C. Avoid repeated freeze/thaw cycles.

UniProt Primary AC: P01236 ([UniProt](#), [ExpASY](#))

Gene Symbol: PRL

KEGG: hsa:5617

String: [9606.ENSP00000302150](#)

Molecular Weight: Calculated MW: 25.9 kDa

Buffer: PBS containing 0.09% sodium azide.

Specificity: Predicted to react with Pig and Horse PRL.

Note: This product is for research use only.

For Reference Only