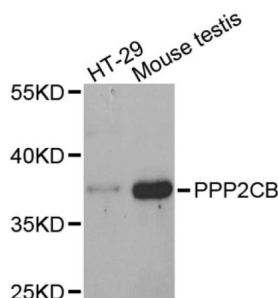


Protein Phosphatase 2 Catalytic Subunit Beta (PPP2CB) Antibody

Catalogue No.: abx002243



Western blot analysis of extracts of various cell lines, using PPP2CB antibody (abx002243) at 1:400 dilution.

PPP2CB Antibody is a Rabbit Polyclonal antibody against PPP2CB. This gene encodes the phosphatase 2A catalytic subunit. Protein phosphatase 2A is one of the four major Ser/Thr phosphatases, and it is implicated in the negative control of cell growth and division. It consists of a common heteromeric core enzyme, which is composed of a catalytic subunit and a constant regulatory subunit, that associates with a variety of regulatory subunits. This gene encodes a beta isoform of the catalytic subunit.

Target:	Protein Phosphatase 2 Catalytic Subunit Beta (PPP2CB)
Clonality:	Polyclonal
Reactivity:	Human, Mouse, Rat
Tested Applications:	WB, IHC, IF/ICC
Host:	Rabbit
Recommended dilutions:	WB: 1/500 - 1/2000, IHC-P: 1/100 - 1/200, IF/ICC: 1/50 - 1/200. Not tested in IHC-F. Optimal dilutions/concentrations should be determined by the end user.
Conjugation:	Unconjugated
Immunogen:	Recombinant fusion protein containing a sequence corresponding to amino acids 1-309 of human PP2A Catalytic β .
Isotype:	IgG
Form:	Liquid
Purification:	Purified by affinity chromatography.
Storage:	Aliquot and store at -20°C . Avoid repeated freeze/thaw cycles.
UniProt Primary AC:	P62714 (UniProt , ExPASy)

Datasheet

Version: 2.0.0
Revision date: 28 Nov 2024



Gene Symbol: PPP2CB

GeneID: [5516](#)

NCBI Accession: NP_001009552.1

KEGG: hsa:5516

String: [9606.ENSP00000221138](#)

Molecular Weight: Calculated MW: 36 kDa
Observed MW: 36 kDa

Buffer: PBS, pH 7.3, containing 0.09% sodium azide, 50% glycerol.

Concentration: 1.21 mg/ml

Note: This product is for research use only.

For Reference Only