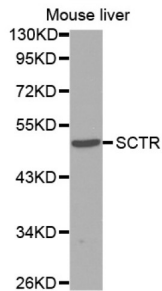


Secretin Receptor (SCTR) Antibody

Catalogue No.: abx002246



Western blot analysis of extracts of mouse liver, using SCTR antibody (abx002246).

SCTR Antibody is a Rabbit Polyclonal antibody against SCTR. The protein encoded by this gene is a G protein-coupled receptor and belongs to the glucagon-VIP-secretin receptor family. It binds secretin which is the most potent regulator of pancreatic bicarbonate, electrolyte and volume secretion. Secretin and its receptor are suggested to be involved in pancreatic cancer and autism.

Target:	Secretin Receptor (SCTR)
Clonality:	Polyclonal
Reactivity:	Human, Mouse
Tested Applications:	WB
Host:	Rabbit
Recommended dilutions:	WB: 1/500 - 1/2000. Optimal dilutions/concentrations should be determined by the end user.
Conjugation:	Unconjugated
Immunogen:	Recombinant fusion protein containing a sequence corresponding to amino acids 151-461 of human SCTR.
Isotype:	IgG
Form:	Liquid
Purification:	Purified by affinity chromatography.
Storage:	Aliquot and store at -20°C. Avoid repeated freeze/thaw cycles.
UniProt Primary AC:	P47872 (UniProt , ExPASy)
Gene Symbol:	SCTR

Datasheet

Version: 2.0.0
Revision date: 22 Nov 2024

GeneID:	6344
KEGG:	hsa:6344
String:	9606.ENSP00000019103
Molecular Weight:	Calculated MW: 50 kDa Observed MW: 50 kDa
Buffer:	PBS, pH 7.3, containing 0.05% Proclin-300, 50% glycerol.
Concentration:	> 0.2 mg/ml
Note:	This product is for research use only.

For Reference Only