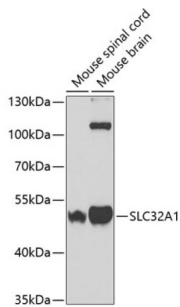
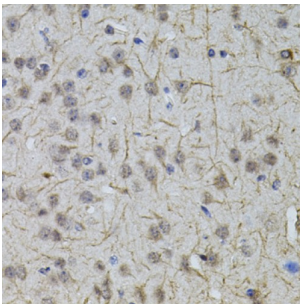


Solute Carrier Family 32 Member 1 (SLC32A1) Antibody

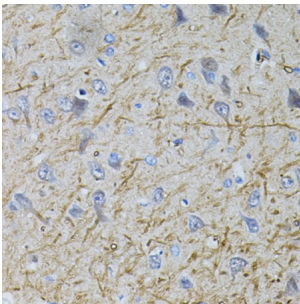
Catalogue No.: abx002248



Western blot analysis of extracts of various cell lines, using SLC32A1 antibody (abx002248) at 1:400 dilution.



Immunohistochemistry of paraffin-embedded mouse brain using SLC32A1 antibody (abx002248) (40x lens).



Immunohistochemistry of paraffin-embedded rat brain using SLC32A1 antibody (abx002248) (40x lens).

SLC32A1 Antibody is a Rabbit Polyclonal antibody against SLC32A1. Vesicular inhibitory amino acid transporter is a protein that in humans is encoded by the SLC32A1 gene. The protein encoded by this gene is an integral membrane protein involved in gamma-aminobutyric acid (GABA) and glycine uptake into synaptic vesicles. The encoded protein is a member of amino acid/polyamine transporter family II.

Target: Solute Carrier Family 32 Member 1 (SLC32A1)

Clonality: Polyclonal

Reactivity: Human, Mouse, Rat

Tested Applications: WB

Host: Rabbit

Recommended dilutions: WB: 1/1000 - 1/2000. Optimal dilutions/concentrations should be determined by the end user.

Datasheet

Version: 2.0.0
Revision date: 25 Nov 2024



| | |
|----------------------------|---|
| Conjugation: | Unconjugated |
| Immunogen: | Recombinant fusion protein containing a sequence corresponding to amino acids 1-525 of human SLC32A1. |
| Isotype: | IgG |
| Form: | Liquid |
| Purification: | Purified by affinity chromatography. |
| Storage: | Aliquot and store at -20°C. Avoid repeated freeze/thaw cycles. |
| UniProt Primary AC: | Q9H598 (UniProt , ExPASy) |
| Gene Symbol: | SLC32A1 |
| GeneID: | 140679 |
| String: | 9606.ENSP00000217420 |
| Molecular Weight: | Calculated MW: 57 kDa Observed MW: 53 kDa |
| Buffer: | PBS, pH 7.3, containing 0.02% sodium azide, 50% glycerol. |
| Concentration: | 1.47 mg/ml |
| Note: | This product is for research use only. |

For Reference Only