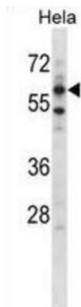


AarF Domain Containing Kinase 5 (Adck5) Antibody

Catalogue No.: abx028538



The function of this protein is not yet clear. It is not known if it has protein kinase activity and what type of substrate it would phosphorylate (Ser, Thr or Tyr).

Target:	AarF Domain Containing Kinase 5 (Adck5)
Clonality:	Polyclonal
Reactivity:	Human
Tested Applications:	ELISA, WB
Host:	Rabbit
Recommended dilutions:	WB: 1/1000. Optimal dilutions/concentrations should be determined by the end user.
Conjugation:	Unconjugated
Immunogen:	KLH-conjugated synthetic peptide between 94-121 amino acids from the N-terminal region of mouse Adck5.
Isotype:	IgG
Form:	Liquid
Purification:	Purified through a protein A column, followed by peptide affinity purification.
Storage:	Aliquot and store at -20°C. Avoid repeated freeze/thaw cycles.
UniProt Primary AC:	Q80V03 (UniProt , ExpASY)
KEGG:	mmu:268822

Datasheet

Version: 2.0.0

Revision date: 06 Oct 2024



String: [10090.ENSMUSP00000125055](#)

Molecular Weight: Calculated MW: 66.7 kDa

Buffer: PBS containing 0.09% sodium azide.

Note: This product is for research use only.

For Reference Only