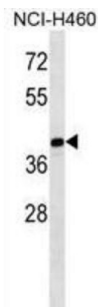


MAGE Family Member B10 (MAGEB10) Antibody

Catalogue No.: abx028667



This gene encodes a member of the B subfamily of the melanoma associated antigen protein family. The encoded protein is specifically expressed in testis and tumor cells. [provided by RefSeq].

Target:	MAGE Family Member B10 (MAGEB10)
Clonality:	Polyclonal
Reactivity:	Human
Tested Applications:	ELISA, WB
Host:	Rabbit
Recommended dilutions:	WB: 1/1000. Optimal dilutions/concentrations should be determined by the end user.
Conjugation:	Unconjugated
Immunogen:	KLH-conjugated synthetic peptide between 88-116 amino acids from the Central region of human MAGEB10.
Isotype:	IgG
Form:	Liquid
Purification:	Purified through a protein A column, followed by peptide affinity purification.
Storage:	Aliquot and store at -20°C. Avoid repeated freeze/thaw cycles.
UniProt Primary AC:	Q96LZ2 (UniProt , ExPASy)
Gene Symbol:	MAGEB10

Datasheet

Version: 3.0.0

Revision date: 08 Mar 2025



KEGG: hsa:139422

String: [9606.ENSP00000368304](#)

Molecular Weight: Calculated MW: 39 kDa

Buffer: PBS containing 0.09% sodium azide.

Note: THIS PRODUCT IS FOR RESEARCH USE ONLY. NOT FOR USE IN DIAGNOSTIC, THERAPEUTIC OR COSMETIC PROCEDURES. NOT FOR HUMAN OR ANIMAL CONSUMPTION.

For Reference Only