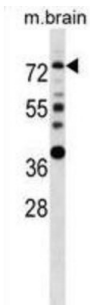


## Estrogen Receptor (ESR1) Antibody

Catalogue No.: abx028672



ESR1 is an estrogen receptor, a ligand-activated transcription factor composed of several domains important for hormone binding, DNA binding, and activation of transcription. The protein localizes to the nucleus where it may form a homodimer or a heterodimer with estrogen receptor 2. Estrogen and its receptors are essential for sexual development and reproductive function, but also play a role in other tissues such as bone. Estrogen receptors are also involved in pathological processes including breast cancer, endometrial cancer, and osteoporosis. Alternative splicing results in several transcript variants, which differ in their 5' UTRs and use different promoters.

<b>Target:</b>	Estrogen Receptor (ESR1)
<b>Clonality:</b>	Polyclonal
<b>Reactivity:</b>	Mouse
<b>Tested Applications:</b>	ELISA, WB
<b>Host:</b>	Rabbit
<b>Recommended dilutions:</b>	WB: 1/1000. Optimal dilutions/concentrations should be determined by the end user.
<b>Conjugation:</b>	Unconjugated
<b>Immunogen:</b>	Recombinant protein between 53-301 amino acids from human ESR1.
<b>Isotype:</b>	IgG
<b>Form:</b>	Liquid
<b>Purification:</b>	Purified through a protein A column, followed by peptide affinity purification.
<b>Storage:</b>	Aliquot and store at -20°C. Avoid repeated freeze/thaw cycles.
<b>UniProt Primary AC:</b>	P03372 ( <a href="#">UniProt</a> , <a href="#">ExPASy</a> )

# Datasheet

Version: 1.0.0  
Revision date: 24 Nov 2024



**KEGG:** hsa:2099

**String:** [9606.ENSP00000405330](#)

**Molecular Weight:** Calculated MW: 66.2 kDa

**Buffer:** PBS containing 0.09% sodium azide.

**Note:** This product is for research use only.

For Reference Only