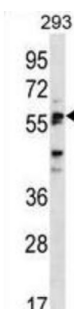
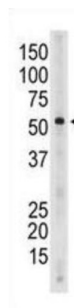
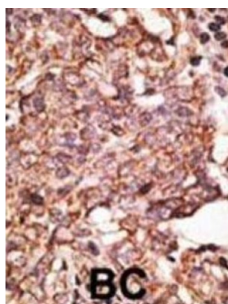


Sialic Acid Binding Ig Like Lectin 6 (SIGLEC6) Antibody

Catalogue No.: abx028688



SIGLEC6 is a putative adhesion molecule that mediates sialic-acid dependent binding to cells by binding to alpha2, 6-linked sialic acid. The sialic acid recognition site may be masked by cis interactions with sialic acids on the same cell surface. SIGLEC6, which interacts with LEP, is expressed at high levels in placenta (cyto-and syncytiotrophoblastic cells) and at lower levels in spleen, peripheral blood leukocytes (predominantly B-cells) and small intestine. It contains 1 copy of a cytoplasmic motif that is referred to as the immunoreceptor tyrosine-based inhibitor motif (ITIM). This motif is involved in downmodulation of cellular responses. The phosphorylated ITIM motif binds to the SH2 domain of PTPN6/SHP-1. The gene for SIGLEC6 belongs to the immunoglobulin superfamily.

Target: Sialic Acid Binding Ig Like Lectin 6 (SIGLEC6)

Clonality: Polyclonal

Reactivity: Human, Mouse

Tested Applications: ELISA, WB, IHC

Datasheet

Version: 3.0.0

Revision date: 30 Apr 2025



Host: Rabbit

Recommended dilutions: WB: 1/1000, IHC-P: 1/50 - 1/100. Not tested in IHC-F. Optimal dilutions/concentrations should be determined by the end user.

Conjugation: Unconjugated

Immunogen: KLH-conjugated synthetic peptide between 381-412 amino acids from the C-terminal region of human SIGLEC6.

Isotype: IgG

Form: Liquid

Purification: Purified through a protein G column, eluted with high and low pH buffers and neutralized immediately, followed by dialysis against PBS.

Storage: Aliquot and store at -20°C. Avoid repeated freeze/thaw cycles.

UniProt Primary AC: O43699 ([UniProt](#), [ExPASy](#))

Gene Symbol: SIGLEC6

Molecular Weight: Calculated MW: 49.9 kDa

Buffer: PBS containing 0.09% sodium azide.

Note: THIS PRODUCT IS FOR RESEARCH USE ONLY. NOT FOR USE IN DIAGNOSTIC, THERAPEUTIC OR COSMETIC PROCEDURES. NOT FOR HUMAN OR ANIMAL CONSUMPTION.