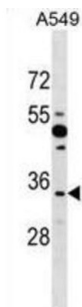


Protein Boule-Like (BOLL) Antibody

Catalogue No.: abx028743



BOLL belongs to the DAZ gene family required for germ cell development. It encodes an RNA-binding protein which is more similar to *Drosophila* Boule than to human proteins encoded by genes DAZ (deleted in azoospermia) or DAZL (deleted in azoospermia-like). Loss of this gene function results in the absence of sperm in semen (azoospermia). Histological studies demonstrated that the primary defect is at the meiotic G2/M transition.

Target:	Protein Boule-Like (BOLL)
Clonality:	Polyclonal
Reactivity:	Human
Tested Applications:	ELISA, WB
Host:	Rabbit
Recommended dilutions:	WB: 1/1000. Optimal dilutions/concentrations should be determined by the end user.
Conjugation:	Unconjugated
Immunogen:	KLH-conjugated synthetic peptide between 23-51 amino acids from the N-terminal region of human BOLL.
Isotype:	IgG
Form:	Liquid
Purification:	Purified through a protein A column, followed by peptide affinity purification.
Storage:	Aliquot and store at -20°C. Avoid repeated freeze/thaw cycles.
UniProt Primary AC:	Q8N9W6 (UniProt , ExpASY)
Gene Symbol:	BOLL

Datasheet

Version: 5.0.0
Revision date: 12 Dec 2024



KEGG: hsa:66037

String: [9606.ENSP00000314792](#)

Molecular Weight: Calculated MW: 31.3 kDa

Buffer: PBS containing 0.09% sodium azide.

Specificity: Predicted to react with Monkey BOLL.

Note: This product is for research use only.

For Reference Only