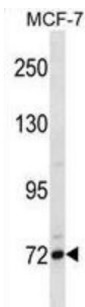


Fc Receptor-Like Protein 5 (FCRL5) Antibody

Catalogue No.: abx028752



FCRL5 is a member of the immunoglobulin receptor superfamily and the Fc-receptor like family. This gene and several other Fc receptor-like gene members are clustered on the long arm of chromosome 1. The encoded protein is a single-pass type I membrane protein and contains 8 immunoglobulin-like C2-type domains. This gene is implicated in B cell development and lymphomagenesis. Alternatively spliced transcript variants encoding different isoforms have been identified.

| | |
|-------------------------------|------------------------------------------------------------------------------------------------------|
| Target: | Fc Receptor-Like Protein 5 (FCRL5) |
| Clonality: | Polyclonal |
| Reactivity: | Human |
| Tested Applications: | ELISA, WB |
| Host: | Rabbit |
| Recommended dilutions: | WB: 1/1000. Optimal dilutions/concentrations should be determined by the end user. |
| Conjugation: | Unconjugated |
| Immunogen: | KLH-conjugated synthetic peptide between 302-331 amino acids from the Central region of human FCRL5. |
| Isotype: | IgG |
| Form: | Liquid |
| Purification: | Purified through a protein A column, followed by peptide affinity purification. |
| Storage: | Aliquot and store at -20°C. Avoid repeated freeze/thaw cycles. |
| UniProt Primary AC: | Q96RD9 (UniProt , ExPASy) |
| Gene Symbol: | FCRL5 |

Datasheet

Version: 2.0.0
Revision date: 04 Dec 2024



KEGG: hsa:83416

String: [9606.ENSP00000354691](#)

Molecular Weight: Calculated MW: 106 kDa

Buffer: PBS containing 0.09% sodium azide.

Note: This product is for research use only.

For Reference Only