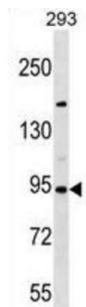


## Semaphorin 3D (SEMA3D) Antibody

Catalogue No.: abx028823



Induces the collapse and paralysis of neuronal growth cones. Could potentially act as repulsive cues toward specific neuronal populations. Binds to neuropilin (By similarity).

**Target:** Semaphorin 3D (SEMA3D)

**Clonality:** Polyclonal

**Reactivity:** Human

**Tested Applications:** ELISA, WB

**Host:** Rabbit

**Recommended dilutions:** WB: 1/1000. Optimal dilutions/concentrations should be determined by the end user.

**Conjugation:** Unconjugated

**Immunogen:** KLH-conjugated synthetic peptide between 611-640 amino acids from the C-terminal region of human SEMA3D.

**Isotype:** IgG

**Form:** Liquid

**Purification:** Purified through a protein A column, followed by peptide affinity purification.

**Storage:** Aliquot and store at -20°C. Avoid repeated freeze/thaw cycles.

**UniProt Primary AC:** O95025 ([UniProt](#), [ExPASy](#))

**Gene Symbol:** SEMA3D

# Datasheet

Version: 2.0.0

Revision date: 05 Jan 2025



**KEGG:** hsa:223117

**String:** [9606.ENSP00000284136](#)

**Molecular Weight:** Calculated MW: 89.7 kDa

**Buffer:** PBS containing 0.09% sodium azide.

**Specificity:** Predicted to react with Mouse SEMA3D.

**Note:** This product is for research use only.

For Reference Only