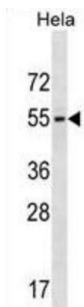


Galanin Receptor Type 3 (GALR3) Antibody

Catalogue No.: abx028824



The neuropeptide galanin modulates a variety of physiologic processes including cognition/memory, sensory/pain processing, hormone secretion, and feeding behavior. The human galanin receptor Types are G protein-coupled receptor Types that functionally couple to their intracellular effector Type through distinct signaling pathways. GALR3 is found in many tissues and may be expressed as 1.4-, 2.4-, and 5-kb transcripts.

Target:	Galanin Receptor Type 3 (GALR3)
Clonality:	Polyclonal
Reactivity:	Human
Tested Applications:	ELISA, WB
Host:	Rabbit
Recommended dilutions:	WB: 1/1000. Optimal dilutions/concentrations should be determined by the end user.
Conjugation:	Unconjugated
Immunogen:	KLH-conjugated synthetic peptide between 279-307 amino acids from the C-terminal region of human GALR3.
Isotype:	IgG
Form:	Liquid
Purification:	Purified through a protein A column, followed by peptide affinity purification.
Storage:	Aliquot and store at -20°C. Avoid repeated freeze/thaw cycles.
UniProt Primary AC:	O60755 (UniProt , ExPASy)
Gene Symbol:	GALR3

Datasheet

Version: 3.0.0
Revision date: 10 Feb 2025



GeneID: [8484](#)

OMIM: [603692](#)

HGNC: 4134

KEGG: hsa:8484

Ensembl: ENSG00000128310

String: [9606.ENSP00000249041](#)

Molecular Weight: Calculated MW: 39.6 kDa

Buffer: PBS containing 0.09% sodium azide.

Specificity: Predicted to react with Mouse and Rat GALR3.

Note: This product is for research use only.

For Reference Only