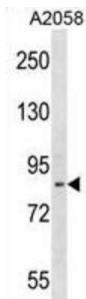


Disintegrin And Metalloproteinase Domain-Containing Protein 23 (ADAM23) Antibody

Catalogue No.: abx028855



This gene encodes a member of the ADAM (a disintegrin and metalloprotease domain) family. Members of this family are membrane-anchored proteins structurally related to snake venom disintegrins, and have been implicated in a variety of biological processes involving cell-cell and cell-matrix interactions, including fertilization, muscle development, and neurogenesis. This gene is highly expressed in the brain and may function as an integrin ligand in the brain.

Target:	Disintegrin And Metalloproteinase Domain-Containing Protein 23 (ADAM23)
Clonality:	Polyclonal
Reactivity:	Human
Tested Applications:	ELISA, WB
Host:	Rabbit
Recommended dilutions:	WB: 1/1000. Optimal dilutions/concentrations should be determined by the end user.
Conjugation:	Unconjugated
Immunogen:	KLH-conjugated synthetic peptide between 803-831 amino acids from the C-terminal region of human ADAM23.
Isotype:	IgG
Form:	Liquid
Purification:	Purified through a protein A column, followed by peptide affinity purification.
Storage:	Aliquot and store at -20°C. Avoid repeated freeze/thaw cycles.
UniProt Primary AC:	O75077 (UniProt , ExPASy)

Datasheet

Version: 3.0.0

Revision date: 13 Mar 2025



Gene Symbol: ADAM23

KEGG: hsa:8745

String: [9606.ENSP00000264377](#)

Molecular Weight: Calculated MW: 91.9 kDa

Buffer: PBS containing 0.09% sodium azide.

Specificity: Predicted to react with Mouse ADAM23.

Note: THIS PRODUCT IS FOR RESEARCH USE ONLY. NOT FOR USE IN DIAGNOSTIC, THERAPEUTIC OR COSMETIC PROCEDURES. NOT FOR HUMAN OR ANIMAL CONSUMPTION.

For Reference Only