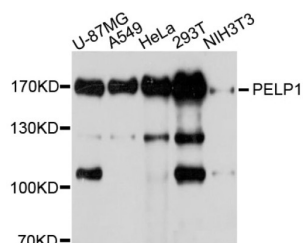


Proline-, Glutamic Acid- And Leucine-Rich Protein 1 (PELP1) Antibody

Catalogue No.: abx002289



Western blot analysis of extracts of various cell lines, using PELP1 antibody (abx002289) at 1/1000 dilution.

PELP1 Antibody is a Rabbit Polyclonal antibody against PELP1. This gene encodes a transcription factor which coactivates transcription of estrogen receptor responsive genes and corepresses genes activated by other hormone receptors or sequence-specific transcription factors. Expression of this gene is regulated by both members of the estrogen receptor family. This gene may be involved in the progression of several types of cancer. Alternative splicing results in multiple transcript variants.

Target:	Proline-, Glutamic Acid- And Leucine-Rich Protein 1 (PELP1)
Clonality:	Polyclonal
Reactivity:	Human, Mouse, Rat
Tested Applications:	WB, IHC, IF/ICC
Host:	Rabbit
Recommended dilutions:	WB: 1/500 - 1/2000, IHC-P: 1/50 - 1/100, IF/ICC: 1/50 - 1/100. Not tested in IHC-F. Optimal dilutions/concentrations should be determined by the end user.
Conjugation:	Unconjugated
Immunogen:	Recombinant fusion protein containing a sequence corresponding to amino acids 1021-1180 of human PELP1.
Isotype:	IgG
Form:	Liquid
Purification:	Purified by affinity chromatography.
Storage:	Aliquot and store at -20°C. Avoid repeated freeze/thaw cycles.
UniProt Primary AC:	Q8IZL8 (UniProt , ExPASy)
Gene Symbol:	PELP1

Datasheet

Version: 4.0.0
Revision date: 11 Jan 2025



GeneID: [27043](#)

NCBI Accession: NP_055204.3

KEGG: hsa:27043

String: [9606.ENSP00000301396](#)

Molecular Weight: Calculated MW: 125 kDa
Observed MW: 160 kDa

Buffer: PBS, pH 7.3, containing 0.01% thimerosal, 50% glycerol.

Concentration: > 0.2 mg/ml

Note: This product is for research use only.

For Reference Only