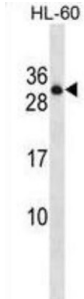


## Protein Tyrosine Phosphatase, Receptor Type C Associated Protein (PTPRCAP) Antibody

Catalogue No.: abx028954



The protein encoded by this gene was identified as a transmembrane phosphoprotein specifically associated with tyrosine phosphatase PTPRC/CD45, a key regulator of T and B-lymphocyte activation. The interaction with PTPRC may be required for the stable expression of this protein.

<b>Target:</b>	Protein Tyrosine Phosphatase, Receptor Type C Associated Protein (PTPRCAP)
<b>Clonality:</b>	Polyclonal
<b>Reactivity:</b>	Human
<b>Tested Applications:</b>	ELISA, WB
<b>Host:</b>	Rabbit
<b>Recommended dilutions:</b>	WB: 1/1000. Optimal dilutions/concentrations should be determined by the end user.
<b>Conjugation:</b>	Unconjugated
<b>Immunogen:</b>	KLH-conjugated synthetic peptide between 90-118 amino acids from the Central region of human PTPRCAP.
<b>Isotype:</b>	IgG
<b>Form:</b>	Liquid
<b>Purification:</b>	Purified through a protein A column, followed by peptide affinity purification.
<b>Storage:</b>	Aliquot and store at -20°C. Avoid repeated freeze/thaw cycles.
<b>UniProt Primary AC:</b>	Q14761 ( <a href="#">UniProt</a> , <a href="#">ExpASY</a> )

# Datasheet

Version: 3.0.0  
Revision date: 03 Feb 2025



**KEGG:** hsa:5790

**String:** [9606.ENSP00000325589](#)

**Molecular Weight:** Calculated MW: 21.2 kDa

**Buffer:** PBS containing 0.09% sodium azide.

**Note:** This product is for research use only.

For Reference Only