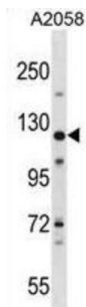


Large Proline-Rich Protein BAG6 (BAG6) Antibody

Catalogue No.: abx029027



This gene was first characterized as part of a cluster of genes located within the human major histocompatibility complex class III region. This gene encodes a nuclear protein that is cleaved by caspase 3 and is implicated in the control of apoptosis. In addition, the protein forms a complex with E1A binding protein p300 and is required for the acetylation of p53 in response to DNA damage. Multiple transcript variants encoding different isoforms have been found for this gene.

Target:	Large Proline-Rich Protein BAG6 (BAG6)
Clonality:	Polyclonal
Reactivity:	Human
Tested Applications:	ELISA, WB
Host:	Rabbit
Recommended dilutions:	WB: 1/1000. Optimal dilutions/concentrations should be determined by the end user.
Conjugation:	Unconjugated
Immunogen:	KLH-conjugated synthetic peptide between 1072-1099 amino acids from the C-terminal region of human BAT3.
Isotype:	IgG
Form:	Liquid
Purification:	Purified through a protein A column, followed by peptide affinity purification.
Storage:	Aliquot and store at -20°C. Avoid repeated freeze/thaw cycles.
UniProt Primary AC:	P46379 (UniProt , ExPASy)
KEGG:	hsa:7917

Datasheet

Version: 1.0.0
Revision date: 20 Jan 2025



String: [9606.ENSF00000365131](#)

Molecular Weight: Calculated MW: 119 kDa

Buffer: PBS containing 0.09% sodium azide.

Specificity: Predicted to react with Mouse, Rat and Pig BAG6.

Note: This product is for research use only.

For Reference Only