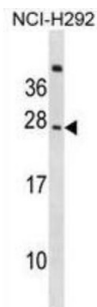


CMRF35-Like Molecule 6 (CD300C) Antibody

Catalogue No.: abx029106



The CMRF35 antigen, which was identified by reactivity with a monoclonal antibody, is present on monocytes, neutrophils, and some T and B lymphocytes (Jackson et al., 1992 [PubMed 1349532]).

Target: CMRF35-Like Molecule 6 (CD300C)

Clonality: Polyclonal

Reactivity: Human

Tested Applications: ELISA, WB

Host: Rabbit

Recommended dilutions: WB: 1/1000. Optimal dilutions/concentrations should be determined by the end user.

Conjugation: Unconjugated

Immunogen: KLH-conjugated synthetic peptide between 195-224 amino acids from the C-terminal region of human CD300C.

Isotype: IgG

Form: Liquid

Purification: Purified through a protein A column, followed by peptide affinity purification.

Storage: Aliquot and store at -20°C. Avoid repeated freeze/thaw cycles.

UniProt Primary AC: Q08708 ([UniProt](#), [ExPASy](#))

KEGG: hsa:10871

Datasheet

Version: 3.0.0
Revision date: 23 Feb 2025



String: [9606.ENSF00000329507](#)

Molecular Weight: Calculated MW: 24.8 kDa

Buffer: PBS containing 0.09% sodium azide.

Note: This product is for research use only.

For Reference Only