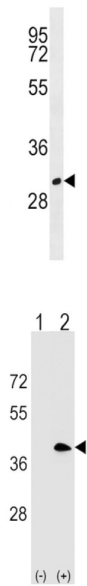


B-Lymphocyte Antigen CD20 (MS4A1) Antibody

Catalogue No.: abx029190



This gene encodes a member of the membrane-spanning 4A gene family. Members of this nascent protein family are characterized by common structural features and similar intron/exon splice boundaries and display unique expression patterns among hematopoietic cells and nonlymphoid tissues. This gene encodes a B-lymphocyte surface molecule which plays a role in the development and differentiation of B-cells into plasma cells. This family member is localized to 11q12, among a cluster of family members. Alternative splicing of this gene results in two transcript variants which encode the same protein.

Target: B-Lymphocyte Antigen CD20 (MS4A1)

Clonality: Polyclonal

Reactivity: Human

Tested Applications: ELISA, WB

Host: Rabbit

Recommended dilutions: WB: 1/1000. Optimal dilutions/concentrations should be determined by the end user.

Conjugation: Unconjugated

Immunogen: KLH-conjugated synthetic peptide between 216-244 amino acids from the C-terminal region of human MS4A1.

Isotype: IgG

Datasheet

Version: 1.0.0
Revision date: 03 Dec 2024



Form:	Liquid
Purification:	Purified through a protein A column, followed by peptide affinity purification.
Storage:	Aliquot and store at -20°C. Avoid repeated freeze/thaw cycles.
UniProt Primary AC:	P11836 (UniProt , ExpASY)
KEGG:	hsa:931
String:	9606.ENSP00000314620
Molecular Weight:	Calculated MW: 33.1 kDa
Buffer:	PBS containing 0.09% sodium azide.
Note:	This product is for research use only.

For Reference Only