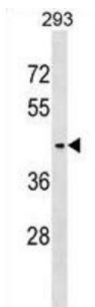


Serine Incorporator 3 (SERINC3) Antibody

Catalogue No.: abx029254



SERINC3 may be involved in cellular transformation.

Target: Serine Incorporator 3 (SERINC3)

Clonality: Polyclonal

Reactivity: Human

Tested Applications: ELISA, WB

Host: Rabbit

Recommended dilutions: WB: 1/1000. Optimal dilutions/concentrations should be determined by the end user.

Conjugation: Unconjugated

Immunogen: KLH-conjugated synthetic peptide between 373-400 amino acids from the C-terminal region of human SERINC3.

Isotype: IgG

Form: Liquid

Purification: Purified through a protein A column, followed by peptide affinity purification.

Storage: Aliquot and store at -20°C. Avoid repeated freeze/thaw cycles.

UniProt Primary AC: Q13530 ([UniProt](#), [ExPASy](#))

KEGG: hsa:10955

String: [9606.ENSP00000340243](#)

Datasheet

Version: 2.0.0
Revision date: 02 Feb 2025



Molecular Weight: Calculated MW: 52.6 kDa

Buffer: PBS containing 0.09% sodium azide.

Specificity: Predicted to react with Mouse SERINC3.

Note: This product is for research use only.

For Reference Only