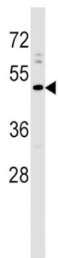


Prolactin-Releasing Peptide Receptor (PRLHR) Antibody

Catalogue No.: abx029285



PRLHR is a 7-transmembrane domain receptor for prolactin-releasing hormone (PRLH; MIM 602663) that is highly expressed in anterior pituitary (Ozawa et al., 2002 [PubMed 11923475]).

Target:	Prolactin-Releasing Peptide Receptor (PRLHR)
Clonality:	Polyclonal
Reactivity:	Human
Tested Applications:	ELISA, WB
Host:	Rabbit
Recommended dilutions:	WB: 1/1000. Optimal dilutions/concentrations should be determined by the end user.
Conjugation:	Unconjugated
Immunogen:	KLH-conjugated synthetic peptide between 284-312 amino acids from the C-terminal region of human PRLHR.
Isotype:	IgG
Form:	Liquid
Purification:	Purified through a protein A column, followed by peptide affinity purification.
Storage:	Aliquot and store at -20°C. Avoid repeated freeze/thaw cycles.
UniProt Primary AC:	P49683 (UniProt , ExpASY)
KEGG:	hsa:2834

Datasheet

Version: 2.0.0
Revision date: 19 Jan 2025



String: [9606.ENSF00000239032](#)

Molecular Weight: Calculated MW: 41.1 kDa

Buffer: PBS containing 0.09% sodium azide.

Specificity: Predicted to react with Cow PRLHR.

Note: This product is for research use only.

For Reference Only