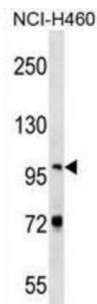


Nuclear Valosin-Containing Protein-Like (NVL) Antibody

Catalogue No.: abx029364



NVL Antibody is a Rabbit Polyclonal antibody against NVL.

Target:	Nuclear Valosin-Containing Protein-Like (NVL)
Clonality:	Polyclonal
Reactivity:	Human
Tested Applications:	ELISA, WB
Host:	Rabbit
Recommended dilutions:	WB: 1/1000. Optimal dilutions/concentrations should be determined by the end user.
Conjugation:	Unconjugated
Immunogen:	KLH-conjugated synthetic peptide between 796-823 amino acids from the C-terminal region of human NVL.
Isotype:	IgG
Form:	Liquid
Purification:	Purified through a protein A column, followed by peptide affinity purification.
Storage:	Aliquot and store at -20°C. Avoid repeated freeze/thaw cycles.
UniProt Primary AC:	O15381 (UniProt , ExPASy)
Gene Symbol:	NVL
KEGG:	hsa:4931

Datasheet

Version: 3.0.0
Revision date: 28 Mar 2025



String: [9606.ENSF00000281701](#)

Molecular Weight: Calculated MW: 95.1 kDa

Buffer: PBS containing 0.09% sodium azide.

Note: THIS PRODUCT IS FOR RESEARCH USE ONLY. NOT FOR USE IN DIAGNOSTIC, THERAPEUTIC OR COSMETIC PROCEDURES. NOT FOR HUMAN OR ANIMAL CONSUMPTION.

For Reference Only