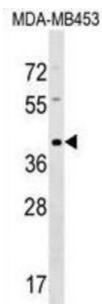


Taste Receptor Type 2 Member 9 (TAS2R9) Antibody

Catalogue No.: abx029462



This gene product belongs to the family of candidate taste receptors that are members of the G-protein-coupled receptor superfamily. These proteins are specifically expressed in the taste receptor cells of the tongue and palate epithelia. They are organized in the genome in clusters and are genetically linked to loci that influence bitter perception in mice and humans. In functional expression studies, they respond to bitter tastants. This gene maps to the taste receptor gene cluster on chromosome 12p13.

Target:	Taste Receptor Type 2 Member 9 (TAS2R9)
Clonality:	Polyclonal
Reactivity:	Human
Tested Applications:	ELISA, WB
Host:	Rabbit
Recommended dilutions:	WB: 1/1000. Optimal dilutions/concentrations should be determined by the end user.
Conjugation:	Unconjugated
Immunogen:	KLH-conjugated synthetic peptide between 154-180 amino acids from the Central region of human TAS2R9.
Isotype:	IgG
Form:	Liquid
Purification:	Purified through a protein A column, followed by peptide affinity purification.
Storage:	Aliquot and store at -20°C. Avoid repeated freeze/thaw cycles.
UniProt Primary AC:	Q9NYW1 (UniProt , ExpASY)

Datasheet

Version: 2.0.0

Revision date: 05 Sep 2024



Gene Symbol: TAS2R9

String: [9606.ENSP00000240691](#)

Molecular Weight: Calculated MW: 35.6 kDa

Buffer: PBS containing 0.09% sodium azide.

Note: This product is for research use only.

For Reference Only