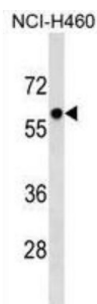


Primase, DNA, Polypeptide 2 (58 kDa) (PRIM2) Antibody

Catalogue No.: abx029524



The replication of DNA in eukaryotic cells is carried out by a complex chromosomal replication apparatus, in which DNA polymerase alpha and primase are two key enzymatic components. Primase, which is a heterodimer of a small subunit and a large subunit, synthesizes small RNA primers for the Okazaki fragments made during discontinuous DNA replication. The protein encoded by this gene is the large, 58 kDa primase subunit. [provided by RefSeq].

Target:	Primase, DNA, Polypeptide 2 (58 kDa) (PRIM2)
Clonality:	Polyclonal
Reactivity:	Human
Tested Applications:	ELISA, WB
Host:	Rabbit
Recommended dilutions:	WB: 1/1000. Optimal dilutions/concentrations should be determined by the end user.
Conjugation:	Unconjugated
Immunogen:	KLH-conjugated synthetic peptide between 317-345 amino acids from the Central region of human PRIM2.
Isotype:	IgG
Form:	Liquid
Purification:	Purified through a protein A column, followed by peptide affinity purification.
Storage:	Aliquot and store at -20°C. Avoid repeated freeze/thaw cycles.
UniProt Primary AC:	P49643 (UniProt , ExPASy)
KEGG:	hsa:5558

Datasheet

Version: 3.0.0
Revision date: 13 Jan 2025



String: [9606.ENSF00000484105](#)

Molecular Weight: Calculated MW: 58.8 kDa

Buffer: PBS containing 0.09% sodium azide.

Specificity: Predicted to react with Rat PRIM2.

Note: This product is for research use only.

For Reference Only