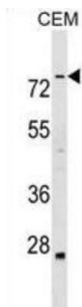


Actin-Binding LIM Protein 3 (ABLIM3) Antibody

Catalogue No.: abx029527



The LIM domain is a double zinc finger structure that promotes protein-protein interactions. LIM domain proteins, such as ABLIM3, play roles in embryonic development, cell lineage determination, and cancer (Krupp et al., 2006 [PubMed 16328021]).

Target:	Actin-Binding LIM Protein 3 (ABLIM3)
Clonality:	Polyclonal
Reactivity:	Human
Tested Applications:	ELISA, WB
Host:	Rabbit
Recommended dilutions:	WB: 1/1000. Optimal dilutions/concentrations should be determined by the end user.
Conjugation:	Unconjugated
Immunogen:	KLH-conjugated synthetic peptide between 613-641 amino acids from the C-terminal region of human ABLIM3.
Isotype:	IgG
Form:	Liquid
Purification:	Purified through a protein A column, followed by peptide affinity purification.
Storage:	Aliquot and store at -20°C. Avoid repeated freeze/thaw cycles.
UniProt Primary AC:	O94929 (UniProt , ExpASY)
Gene Symbol:	ABLIM3

Datasheet

Version: 5.0.0
Revision date: 14 Jan 2025



KEGG: hsa:22885

String: [9606.ENSP00000425394](#)

Molecular Weight: Calculated MW: 77.8 kDa

Buffer: PBS containing 0.09% sodium azide.

Specificity: Predicted to react with Mouse ABLIM3.

Note: This product is for research use only.

For Reference Only