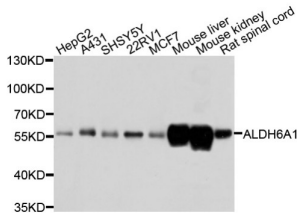


Methylmalonate-Semialdehyde Dehydrogenase [acylating], Mitochondrial (ALDH6A1) Antibody

Catalogue No.: abx002356



Western blot analysis of extracts of various cell lines, using ALDH6A1 antibody (abx002356) at 1/1000 dilution.

ALDH6A1 Antibody is a Rabbit Polyclonal antibody against ALDH6A1. This gene encodes a member of the aldehyde dehydrogenase protein family. The encoded protein is a mitochondrial methylmalonate semialdehyde dehydrogenase that plays a role in the valine and pyrimidine catabolic pathways. This protein catalyzes the irreversible oxidative decarboxylation of malonate and methylmalonate semialdehydes to acetyl- and propionyl-CoA. Methylmalonate semialdehyde dehydrogenase deficiency is characterized by elevated beta-alanine, 3-hydroxypropionic acid, and both isomers of 3-amino and 3-hydroxyisobutyric acids in urine organic acids. Alternate splicing results in multiple transcript variants.

Target:	Methylmalonate-Semialdehyde Dehydrogenase [acylating], Mitochondrial (ALDH6A1)
Clonality:	Polyclonal
Reactivity:	Human, Mouse, Rat
Tested Applications:	WB, IF/ICC
Host:	Rabbit
Recommended dilutions:	WB: 1/500 - 1/2000, IF/ICC: 1/50 - 1/200. Optimal dilutions/concentrations should be determined by the end user.
Conjugation:	Unconjugated
Immunogen:	Recombinant fusion protein containing a sequence corresponding to amino acids 326-535 of human ALDH6A1.
Isotype:	IgG
Form:	Liquid
Purification:	Purified by affinity chromatography.
Storage:	Aliquot and store at -20°C. Avoid repeated freeze/thaw cycles.

Datasheet

Version: 2.0.0
Revision date: 02 Dec 2024



UniProt Primary AC: Q02252 ([UniProt](#), [ExPASy](#))

Gene Symbol: ALDH6A1

GeneID: [4329](#)

NCBI Accession: NP_005580.1

KEGG: hsa:4329

String: [9606.ENSP00000450436](#)

Molecular Weight: Calculated MW: 58 kDa
Observed MW: 58 kDa

Buffer: PBS, pH 7.3, containing 0.02% sodium azide, 50% glycerol.

Concentration: > 0.2 mg/ml

Note: This product is for research use only.

For Reference Only