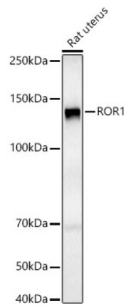


Receptor Tyrosine Kinase Like Orphan Receptor 1 (ROR1) Antibody

Catalogue No.: abx002361



Western blot analysis of lysates from Rat uterus, using ROR1 Antibody at 1/800 dilution. Secondary antibody: HRP-conjugated Goat anti-Rabbit IgG (H+L) at 1/10000 dilution. Lysates/proteins: 25 µg per lane. Blocking buffer: 3% nonfat dry milk in TBST. Exposure time: 90s.

ROR1 Antibody is a Rabbit Polyclonal antibody against ROR1. This gene encodes a receptor tyrosine kinase-like orphan receptor that modulates neurite growth in the central nervous system. The encoded protein is a glycosylated type I membrane protein that belongs to the ROR subfamily of cell surface receptors. It is a pseudokinase that lacks catalytic activity and may interact with the non-canonical Wnt signalling pathway. This gene is highly expressed during early embryonic development but expressed at very low levels in adult tissues. Increased expression of this gene is associated with B-cell chronic lymphocytic leukaemia. Alternative splicing results in multiple transcript variants encoding different isoforms.

| | |
|-------------------------------|--|
| Target: | Receptor Tyrosine Kinase Like Orphan Receptor 1 (ROR1) |
| Clonality: | Polyclonal |
| Reactivity: | Rat |
| Tested Applications: | ELISA, WB |
| Host: | Rabbit |
| Recommended dilutions: | ELISA: 1 µg/ml, WB: 1/500 - 1/1000. Optimal dilutions/concentrations should be determined by the end user. |
| Conjugation: | Unconjugated |
| Immunogen: | Recombinant fusion protein containing a sequence corresponding to amino acids 24-403 of human ROR1. |
| Isotype: | IgG |
| Form: | Liquid |
| Purification: | Purified by affinity chromatography. |
| Storage: | Aliquot and store at -20°C. Avoid repeated freeze/thaw cycles. |
| UniProt Primary AC: | Q01973 (UniProt , ExpASY) |

Datasheet

Version: 5.0.0
Revision date: 05 Mar 2025



Gene Symbol: ROR1

GeneID: [4919](#)

NCBI Accession: NP_005003.2

KEGG: hsa:4919

String: [9606.ENSP00000360120](#)

Molecular Weight: Calculated MW: 104 kDa
Observed MW: 135 kDa

Buffer: PBS, pH 7.3, containing 0.09% sodium azide, 50% glycerol.

Concentration: > 0.2 mg/ml

Note: THIS PRODUCT IS FOR RESEARCH USE ONLY. NOT FOR USE IN DIAGNOSTIC, THERAPEUTIC OR COSMETIC PROCEDURES. NOT FOR HUMAN OR ANIMAL CONSUMPTION.

For Reference Only