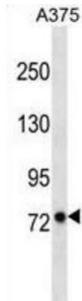


Leucine-Rich Repeat And Fibronectin Type-III Domain-Containing Protein 2 (LRFN2) Antibody

Catalogue No.: abx029612



LRFN2 promotes neurite outgrowth in hippocampal neurons. Enhances the cell surface expression of 2 NMDA receptor subunits GRIN1 and GRIN2A. May play a role in redistributing DLG4 to the cell periphery (By similarity).

Target: Leucine-Rich Repeat And Fibronectin Type-III Domain-Containing Protein 2 (LRFN2)

Clonality: Polyclonal

Reactivity: Human

Tested Applications: ELISA, WB

Host: Rabbit

Recommended dilutions: WB: 1/1000. Optimal dilutions/concentrations should be determined by the end user.

Conjugation: Unconjugated

Immunogen: KLH-conjugated synthetic peptide between 630-659 amino acids from the C-terminal region of human LRFN2.

Isotype: IgG

Form: Liquid

Purification: Purified through a protein A column, followed by peptide affinity purification.

Storage: Aliquot and store at -20°C. Avoid repeated freeze/thaw cycles.

UniProt Primary AC: Q9ULH4 ([UniProt](#), [ExPASy](#))

Gene Symbol: LRFN2

Datasheet

Version: 1.0.0

Revision date: 16 Dec 2024



String: [9606.ENSF00000345985](#)

Molecular Weight: Calculated MW: 84.7 kDa

Buffer: PBS containing 0.09% sodium azide.

Specificity: Predicted to react with Monkey LRFN2.

Note: This product is for research use only.

For Reference Only