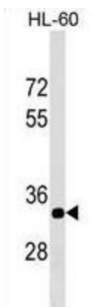


## Era (E. Coli G-Protein Homolog)-Like 1 (ERAL1) Antibody

Catalogue No.: abx029664



Era is an essential GTPase that is required for proper cell cycle progression and cell division in *E. coli*. Human homologues have been isolated which have been designated ERAL1A and ERAL1B.

|                               |  |
|-------------------------------|--|
| <b>Target:</b>                | Era (E. Coli G-Protein Homolog)-Like 1 (ERAL1)   |
| <b>Clonality:</b>             | Polyclonal   |
| <b>Reactivity:</b>            | Human  |
| <b>Tested Applications:</b>   | ELISA, WB  |
| <b>Host:</b>                  | Rabbit   |
| <b>Recommended dilutions:</b> | WB: 1/1000. Optimal dilutions/concentrations should be determined by the end user.                   |
| <b>Conjugation:</b>           | Unconjugated   |
| <b>Immunogen:</b>             | KLH-conjugated synthetic peptide between 152-180 amino acids from the Central region of human ERAL1. |
| <b>Isotype:</b>               | IgG  |
| <b>Form:</b>                  | Liquid   |
| <b>Purification:</b>          | Purified through a protein A column, followed by peptide affinity purification.                      |
| <b>Storage:</b>               | Aliquot and store at -20°C. Avoid repeated freeze/thaw cycles.                                       |
| <b>UniProt Primary AC:</b>    | O75616 ( <a href="#">UniProt</a> , <a href="#">ExPASy</a> )  |
| <b>Gene Symbol:</b>           | ERAL1  |

# Datasheet

Version: 4.0.0  
Revision date: 27 Mar 2025



**KEGG:** hsa:26284

**String:** [9606.ENSP00000254928](#)

**Molecular Weight:** Calculated MW: 48.4 kDa

**Buffer:** PBS containing 0.09% sodium azide.

**Note:** THIS PRODUCT IS FOR RESEARCH USE ONLY. NOT FOR USE IN DIAGNOSTIC, THERAPEUTIC OR COSMETIC PROCEDURES. NOT FOR HUMAN OR ANIMAL CONSUMPTION.

For Reference Only