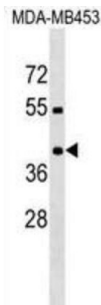


## Proline-Rich Transmembrane Protein 2 (PRRT2) Antibody

Catalogue No.: abx029679



PRRT2 belongs to the CD225 family. There are 3 named isoforms of PRRT2 produced by alternative splicing.

<b>Target:</b>	Proline-Rich Transmembrane Protein 2 (PRRT2)
<b>Clonality:</b>	Polyclonal
<b>Reactivity:</b>	Human
<b>Tested Applications:</b>	ELISA, WB, FCM
<b>Host:</b>	Rabbit
<b>Recommended dilutions:</b>	WB: 1/1000, FCM: 1/25. Optimal dilutions/concentrations should be determined by the end user.
<b>Conjugation:</b>	Unconjugated
<b>Immunogen:</b>	KLH-conjugated synthetic peptide between 207-233 amino acids from the Central region of human PRRT2.
<b>Isotype:</b>	IgG
<b>Form:</b>	Liquid
<b>Purification:</b>	Purified through a protein A column, followed by peptide affinity purification.
<b>Storage:</b>	Aliquot and store at -20°C. Avoid repeated freeze/thaw cycles.
<b>UniProt Primary AC:</b>	Q7Z6L0 ( <a href="#">UniProt</a> , <a href="#">ExpASY</a> )
<b>Gene Symbol:</b>	PRRT2
<b>KEGG:</b>	hsa:112476

# Datasheet

Version: 2.0.0  
Revision date: 23 Dec 2024



**String:** [9606.ENSF00000456226](#)

**Molecular Weight:** Calculated MW: 34.9 kDa

**Buffer:** PBS containing 0.09% sodium azide.

**Note:** This product is for research use only.

For Reference Only