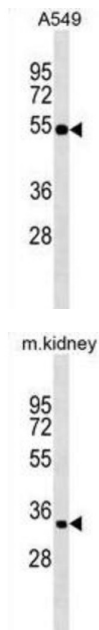


mRNA Decay Activator Protein ZFP36L2 (ZFP36L2) Antibody

Catalogue No.: abx029700



This gene is a member of the TIS11 family of early response genes. Family members are induced by various agonists such as the phorbol ester TPA and the polypeptide mitogen EGF. The encoded protein contains a distinguishing putative zinc finger domain with a repeating cys-his motif. This putative nuclear transcription factor most likely functions in regulating the response to growth factors.

Target: mRNA Decay Activator Protein ZFP36L2 (ZFP36L2)

Clonality: Polyclonal

Reactivity: Human, Mouse

Tested Applications: ELISA, WB

Host: Rabbit

Recommended dilutions: WB: 1/1000. Optimal dilutions/concentrations should be determined by the end user.

Conjugation: Unconjugated

Immunogen: KLH-conjugated synthetic peptide between 166-193 amino acids from the Central region of human ZFP36L2.

Isotype: IgG

Form: Liquid

Datasheet

Version: 5.0.0
Revision date: 27 Mar 2025



Purification:	Purified through a protein A column, followed by peptide affinity purification.
Storage:	Aliquot and store at -20°C. Avoid repeated freeze/thaw cycles.
UniProt Primary AC:	P47974 (UniProt , ExPASy)
KEGG:	hsa:678
String:	9606.ENSP00000282388
Molecular Weight:	Calculated MW: 51.1 kDa
Buffer:	PBS containing 0.09% sodium azide.
Specificity:	Predicted to react with Rat and Xenopus ZFP36L2.
Note:	THIS PRODUCT IS FOR RESEARCH USE ONLY. NOT FOR USE IN DIAGNOSTIC, THERAPEUTIC OR COSMETIC PROCEDURES. NOT FOR HUMAN OR ANIMAL CONSUMPTION.

For Reference Only