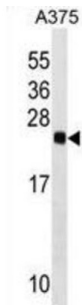


RAB2B, Member RAS Oncogene Family (RAB2B) Antibody

Catalogue No.: abx029877



Members of the Rab protein family are nontransforming monomeric GTP-binding proteins of the Ras superfamily that contain 4 highly conserved regions involved in GTP binding and hydrolysis. Rab proteins are prenylated, membrane-bound proteins involved in vesicular fusion and trafficking; see MIM 179508.[supplied by OMIM].

Target:	RAB2B, Member RAS Oncogene Family (RAB2B)
Clonality:	Polyclonal
Reactivity:	Human
Tested Applications:	ELISA, WB
Host:	Rabbit
Recommended dilutions:	WB: 1/1000. Optimal dilutions/concentrations should be determined by the end user.
Conjugation:	Unconjugated
Immunogen:	KLH-conjugated synthetic peptide between 105-131 amino acids from the Central region of human RAB2B.
Isotype:	IgG
Form:	Liquid
Purification:	Purified through a protein A column, followed by peptide affinity purification.
Storage:	Aliquot and store at -20°C. Avoid repeated freeze/thaw cycles.
UniProt Primary AC:	Q8WUD1 (UniProt , ExpASY)
Gene Symbol:	RAB2B

Datasheet

Version: 2.0.0
Revision date: 05 Jan 2025



KEGG: hsa:84932

String: [9606.ENSP00000380869](#)

Molecular Weight: Calculated MW: 24.2 kDa

Buffer: PBS containing 0.09% sodium azide.

Specificity: Predicted to react with Mouse RAB2B.

Note: This product is for research use only.

For Reference Only