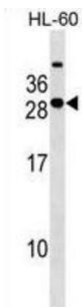


Syntaxin Binding Protein 6 (STXBP6) Antibody

Catalogue No.: abx029878



STXBP6 binds components of the SNARE complex (see MIM 603215) and may be involved in regulating SNARE complex formation (Scales et al., 2002 [PubMed 12145319]).

Target:	Syntaxin Binding Protein 6 (STXBP6)
Clonality:	Polyclonal
Reactivity:	Human
Tested Applications:	ELISA, WB
Host:	Rabbit
Recommended dilutions:	WB: 1/1000. Optimal dilutions/concentrations should be determined by the end user.
Conjugation:	Unconjugated
Immunogen:	KLH-conjugated synthetic peptide between 71-97 amino acids from the Central region of human STXBP6.
Isotype:	IgG
Form:	Liquid
Purification:	Purified through a protein A column, followed by peptide affinity purification.
Storage:	Aliquot and store at -20°C. Avoid repeated freeze/thaw cycles.
UniProt Primary AC:	Q8NFX7 (UniProt , ExPASy)
Gene Symbol:	STXBP6

Datasheet

Version: 2.0.0

Revision date: 09 Apr 2025



KEGG: hsa:29091

String: [9606.ENSP00000324302](#)

Molecular Weight: Calculated MW: 23.6 kDa

Buffer: PBS containing 0.09% sodium azide.

Note: THIS PRODUCT IS FOR RESEARCH USE ONLY. NOT FOR USE IN DIAGNOSTIC, THERAPEUTIC OR COSMETIC PROCEDURES. NOT FOR HUMAN OR ANIMAL CONSUMPTION.

For Reference Only