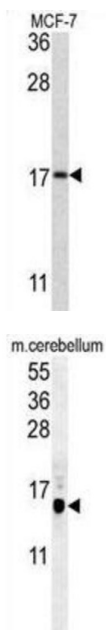
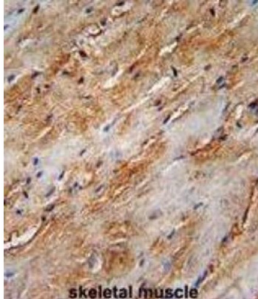


## Microtubule-Associated Proteins 1A/1B Light Chain 3B (APG8b) Antibody

Catalogue No.: abx029954



The product of this gene is a subunit of neuronal microtubule-associated MAP1A and MAP1B proteins, which are involved in microtubule assembly and important for neurogenesis. Studies on the rat homolog implicate a role for this gene in autophagy, a process that involves the bulk degradation of cytoplasmic component.

**Target:** Microtubule-Associated Proteins 1A/1B Light Chain 3B (APG8b)

**Clonality:** Polyclonal

**Reactivity:** Human, Mouse

**Tested Applications:** ELISA, WB, IHC, FCM

**Host:** Rabbit

# Datasheet

Version: 2.0.0

Revision date: 26 Mar 2025



**Recommended dilutions:** WB: 1/1000, IHC-P: 1/50 - 1/100, FCM: 1/10 - 1/50. Not tested in IHC-F. Optimal dilutions/concentrations should be determined by the end user.

**Conjugation:** Unconjugated

**Immunogen:** KLH-conjugated synthetic peptide between 74-106 amino acids from the Central region of human APG8b (MAP1LC3B) T93/Y99.

**Isotype:** IgG

**Form:** Liquid

**Purification:** Purified through a protein A column, followed by peptide affinity purification.

**Storage:** Aliquot and store at -20°C. Avoid repeated freeze/thaw cycles.

**UniProt Primary AC:** Q9GZQ8 ([UniProt](#), [ExPASy](#))

**String:** [9606.ENSP00000268607](#)

**Molecular Weight:** Calculated MW: 14.7 kDa

**Buffer:** PBS containing 0.09% sodium azide.

**Note:** THIS PRODUCT IS FOR RESEARCH USE ONLY. NOT FOR USE IN DIAGNOSTIC, THERAPEUTIC OR COSMETIC PROCEDURES. NOT FOR HUMAN OR ANIMAL CONSUMPTION.

For Reference Only