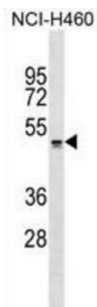


Pyroglutamylated RFamide Peptide Receptor (QRFPR) Antibody

Catalogue No.: abx030023



G protein-coupled receptors (GPCRs, or GPRs) contain 7 transmembrane domains and transduce extracellular signals through heterotrimeric G proteins.

Target:	Pyroglutamylated RFamide Peptide Receptor (QRFPR)
Clonality:	Polyclonal
Reactivity:	Human
Tested Applications:	ELISA, WB
Host:	Rabbit
Recommended dilutions:	WB: 1/1000. Optimal dilutions/concentrations should be determined by the end user.
Conjugation:	Unconjugated
Immunogen:	KLH-conjugated synthetic peptide between 172-198 amino acids from the Central region of human QRFPR.
Isotype:	IgG
Form:	Liquid
Purification:	Purified through a protein A column, followed by peptide affinity purification.
Storage:	Aliquot and store at -20°C. Avoid repeated freeze/thaw cycles.
UniProt Primary AC:	Q96P65 (UniProt , ExpASY)
Gene Symbol:	QRFPR

Datasheet

Version: 2.0.0
Revision date: 06 Oct 2024



KEGG: hsa:84109

String: [9606.ENSP00000377948](#)

Molecular Weight: Calculated MW: 49.5 kDa

Buffer: PBS containing 0.09% sodium azide.

Specificity: Predicted to react with Mouse and Rat QRFPR.

Note: This product is for research use only.

For Reference Only