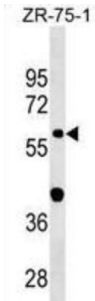


Glycerophosphodiester Phosphodiesterase Domain Containing 2 (GDPD2) Antibody

Catalogue No.: abx030269



This gene encodes a member of the glycerophosphodiester phosphodiesterase enzyme family. The encoded protein hydrolyzes glycerophosphoinositol to produce inositol 1-phosphate and glycerol. This protein may have a role in osteoblast differentiation and growth. Alternate splicing results in multiple transcript variants.

Target:	Glycerophosphodiester Phosphodiesterase Domain Containing 2 (GDPD2)
Clonality:	Polyclonal
Reactivity:	Human
Tested Applications:	ELISA, WB
Host:	Rabbit
Recommended dilutions:	WB: 1/1000. Optimal dilutions/concentrations should be determined by the end user.
Conjugation:	Unconjugated
Immunogen:	KLH-conjugated synthetic peptide between 305-334 amino acids from the Central region of human GDPD2.
Isotype:	IgG
Form:	Liquid
Purification:	Purified through a protein A column, followed by peptide affinity purification.
Storage:	Aliquot and store at -20°C. Avoid repeated freeze/thaw cycles.
UniProt Primary AC:	Q9HCC8 (UniProt , ExPASy)

Datasheet

Version: 3.0.0
Revision date: 24 Nov 2024



Gene Symbol: GDPD2

String: [9606.ENSP00000414019](#)

Molecular Weight: Calculated MW: 61.7 kDa

Buffer: PBS containing 0.09% sodium azide.

Note: This product is for research use only.

For Reference Only