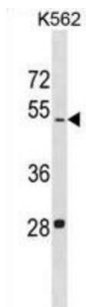


## L-Lactate Dehydrogenase A-Like 6B (LDHAL6B) Antibody

Catalogue No.: abx030348



LDHAL6B belongs to the LDH/MDH superfamily. LDH family. The specific function of the protein remains unknown.

<b>Target:</b>	L-Lactate Dehydrogenase A-Like 6B (LDHAL6B)
<b>Clonality:</b>	Polyclonal
<b>Reactivity:</b>	Human
<b>Tested Applications:</b>	ELISA, WB
<b>Host:</b>	Rabbit
<b>Recommended dilutions:</b>	WB: 1/1000. Optimal dilutions/concentrations should be determined by the end user.
<b>Conjugation:</b>	Unconjugated
<b>Immunogen:</b>	KLH-conjugated synthetic peptide between 45-71 amino acids from the N-terminal region of human LDHAL6B.
<b>Isotype:</b>	IgG
<b>Form:</b>	Liquid
<b>Purification:</b>	Purified through a protein A column, followed by peptide affinity purification.
<b>Storage:</b>	Aliquot and store at -20°C. Avoid repeated freeze/thaw cycles.
<b>UniProt Primary AC:</b>	Q9BYZ2 ( <a href="#">UniProt</a> , <a href="#">ExPASy</a> )
<b>Gene Symbol:</b>	LDHAL6B
<b>String:</b>	<a href="#">9606.ENSP00000302393</a>

# Datasheet

Version: 3.0.0

Revision date: 08 Sep 2024



**Molecular Weight:** Calculated MW: 41.9 kDa

**Buffer:** PBS containing 0.09% sodium azide.

**Note:** This product is for research use only.

For Reference Only