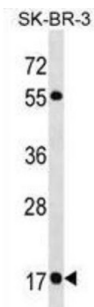


Ras-Related Protein Rab-19 (RAB19) Antibody

Catalogue No.: abx030451



The function of this protein is unknown.

Target:	Ras-Related Protein Rab-19 (RAB19)
Clonality:	Polyclonal
Reactivity:	Human
Tested Applications:	ELISA, WB
Host:	Rabbit
Recommended dilutions:	WB: 1/1000. Optimal dilutions/concentrations should be determined by the end user.
Conjugation:	Unconjugated
Immunogen:	KLH-conjugated synthetic peptide between 1-30 amino acids from the N-terminal region of human RAB19.
Isotype:	IgG
Form:	Liquid
Purification:	Purified through a protein A column, followed by peptide affinity purification.
Storage:	Aliquot and store at -20°C. Avoid repeated freeze/thaw cycles.
UniProt Primary AC:	A4D1S5 (UniProt , ExPASy)
Gene Symbol:	RAB19
KEGG:	hsa:401409

Datasheet

Version: 2.0.0
Revision date: 03 Sep 2024



String: [9606.ENSF00000440167](#)

Molecular Weight: Calculated MW: 24.4 kDa

Buffer: PBS containing 0.09% sodium azide.

Note: This product is for research use only.

For Reference Only