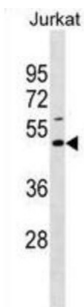


E11-Associated Factor 1 (EAF1) Antibody

Catalogue No.: abx030455



EAF1 acts as a transcriptional transactivator of ELL and ELL2 elongation activities.

Target: E11-Associated Factor 1 (EAF1)

Clonality: Polyclonal

Reactivity: Human

Tested Applications: ELISA, WB

Host: Rabbit

Recommended dilutions: WB: 1/1000. Optimal dilutions/concentrations should be determined by the end user.

Conjugation: Unconjugated

Immunogen: KLH-conjugated synthetic peptide between 58-85 amino acids from the Central region of human EAF1.

Isotype: IgG

Form: Liquid

Purification: Purified through a protein A column, followed by peptide affinity purification.

Storage: Aliquot and store at -20°C. Avoid repeated freeze/thaw cycles.

UniProt Primary AC: Q96JC9 ([UniProt](#), [ExPASy](#))

Gene Symbol: EAF1

KEGG: hsa:85403

Datasheet

Version: 2.0.0

Revision date: 24 Nov 2024



String: [9606.ENSF00000380054](#)

Molecular Weight: Calculated MW: 29 kDa

Buffer: PBS containing 0.09% sodium azide.

Specificity: Predicted to react with Mouse EAF1.

Note: This product is for research use only.

For Reference Only