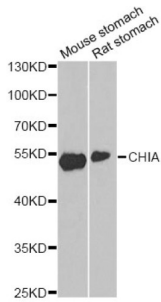
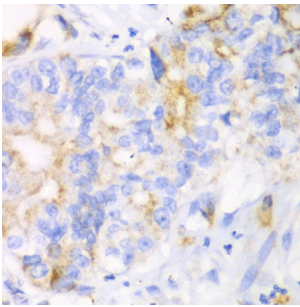


Acidic Mammalian Chitinase (CHIA) Antibody

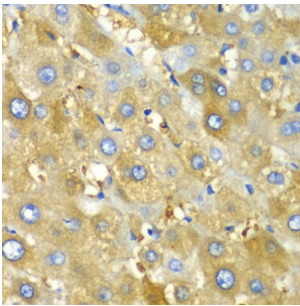
Catalogue No.: abx002450



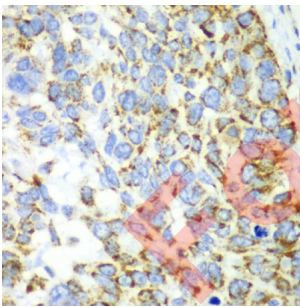
Western blot analysis of extracts of various cell lines, using CHIA antibody (abx002450) at 1/1000 dilution.



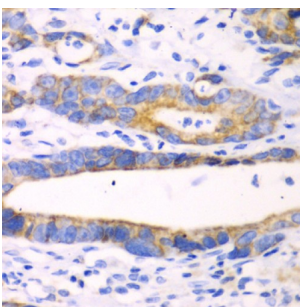
Immunohistochemistry of paraffin-embedded human liver cancer using CHIA antibody (abx002450) at dilution of 1/100 (40x lens).



Immunohistochemistry of paraffin-embedded human liver injury using CHIA antibody (abx002450) at dilution of 1/100 (40x lens).



Immunohistochemistry of paraffin-embedded human esophageal cancer using CHIA antibody (abx002450) at dilution of 1/100 (40x lens).



Immunohistochemistry of paraffin-embedded human gastric cancer using CHIA antibody (abx002450) at dilution of 1/100 (40x lens).

Datasheet

Version: 2.0.0
Revision date: 27 Nov 2024



CHIA Antibody is a Rabbit Polyclonal antibody against CHIA. The protein encoded by this gene degrades chitin, which is found in the cell wall of most fungi as well as in arthropods and some nematodes. The encoded protein can also stimulate interleukin 13 expression, and variations in this gene can lead to asthma susceptibility. Several transcript variants encoding a few different isoforms have been found for this gene.

Target:	Acidic Mammalian Chitinase (CHIA)
Clonality:	Polyclonal
Reactivity:	Human, Mouse, Rat
Tested Applications:	WB, IHC
Host:	Rabbit
Recommended dilutions:	WB: 1/500 - 1/2000, IHC-P: 1/50 - 1/200. Not tested in IHC-F. Optimal dilutions/concentrations should be determined by the end user.
Conjugation:	Unconjugated
Immunogen:	Recombinant fusion protein containing a sequence corresponding to amino acids 1-368 of human CHIA.
Isotype:	IgG
Form:	Liquid
Purification:	Purified by affinity chromatography.
Storage:	Aliquot and store at -20°C. Avoid repeated freeze/thaw cycles.
UniProt Primary AC:	Q9BZP6 (UniProt , ExPASy)
Gene Symbol:	CHIA
GeneID:	27159
NCBI Accession:	NP_001244932.1
String:	9606.ENSP00000358755
Molecular Weight:	Calculated MW: 52 kDa Observed MW: 52 kDa
Buffer:	PBS, pH 7.3, containing 0.02% sodium azide, 50% glycerol.
Concentration:	> 0.2 mg/ml

Datasheet

Version: 2.0.0

Revision date: 27 Nov 2024



Note: This product is for research use only.

For Reference Only