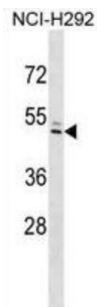


Interferon Induced Protein 44-Like (IFI44L) Antibody

Catalogue No.: abx030569



The function of this protein remains unknown.

Target:	Interferon Induced Protein 44-Like (IFI44L)
Clonality:	Polyclonal
Reactivity:	Human
Tested Applications:	ELISA, WB
Host:	Rabbit
Recommended dilutions:	WB: 1/2000. Optimal dilutions/concentrations should be determined by the end user.
Conjugation:	Unconjugated
Immunogen:	KLH-conjugated synthetic peptide between 151-180 amino acids from the C-terminal region of human IFI44L.
Isotype:	IgG
Form:	Liquid
Purification:	Purified through a protein A column, followed by peptide affinity purification.
Storage:	Aliquot and store at -20°C. Avoid repeated freeze/thaw cycles.
UniProt Primary AC:	Q53G44 (UniProt , ExPASy)
KEGG:	hsa:10964
String:	9606.ENSP00000359787

Datasheet

Version: 1.0.0
Revision date: 13 Mar 2025



Molecular Weight: Calculated MW: 51.3 kDa

Buffer: PBS containing 0.09% sodium azide.

Note: THIS PRODUCT IS FOR RESEARCH USE ONLY. NOT FOR USE IN DIAGNOSTIC, THERAPEUTIC OR COSMETIC PROCEDURES. NOT FOR HUMAN OR ANIMAL CONSUMPTION.

For Reference Only