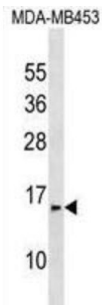


Proline-Rich Protein 24 (PRR24) Antibody

Catalogue No.: abx030617



The function of this protein remains unknown.

Target: Proline-Rich Protein 24 (PRR24)

Clonality: Polyclonal

Reactivity: Human

Tested Applications: ELISA, WB

Host: Rabbit

Recommended dilutions: WB: 1/1000. Optimal dilutions/concentrations should be determined by the end user.

Conjugation: Unconjugated

Immunogen: KLH-conjugated synthetic peptide between 102-128 amino acids from the C-terminal region of human PRR24.

Isotype: IgG

Form: Liquid

Purification: Purified through a protein A column, followed by peptide affinity purification.

Storage: Aliquot and store at -20°C. Avoid repeated freeze/thaw cycles.

UniProt Primary AC: C9JVV0 ([UniProt](#), [ExPASy](#))

Gene Symbol: INAFM1

KEGG: hsa:255783

Datasheet

Version: 3.0.0

Revision date: 11 Jan 2025



String: [9606.ENSF00000447679](#)

Molecular Weight: Calculated MW: 14.7 kDa

Buffer: PBS containing 0.09% sodium azide.

Note: This product is for research use only.

For Reference Only