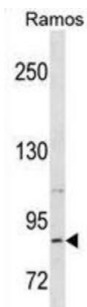


Relaxin/Insulin Like Family Peptide Receptor 2 (RXFP2) Antibody

Catalogue No.: abx030698



This gene encodes a member of the GPCR (G protein-coupled, 7-transmembrane receptor) family. Mutations in this gene are associated with cryptorchidism. Alternatively spliced transcript variants encoding different isoforms have been found for this gene.

Target:	Relaxin/Insulin Like Family Peptide Receptor 2 (RXFP2)
Clonality:	Polyclonal
Reactivity:	Human
Tested Applications:	ELISA, WB
Host:	Rabbit
Recommended dilutions:	WB: 1/1000. Optimal dilutions/concentrations should be determined by the end user.
Conjugation:	Unconjugated
Immunogen:	KLH-conjugated synthetic peptide between 692-721 amino acids from the C-terminal region of human RXFP2.
Isotype:	IgG
Form:	Liquid
Purification:	Purified through a protein A column, followed by peptide affinity purification.
Storage:	Aliquot and store at -20°C. Avoid repeated freeze/thaw cycles.
UniProt Primary AC:	Q8WXD0 (UniProt , ExpASY)
Gene Symbol:	RXFP2

Datasheet

Version: 3.0.0
Revision date: 21 Jan 2025



KEGG: hsa:122042

String: [9606.ENSP00000298386](#)

Molecular Weight: Calculated MW: 86.5 kDa

Buffer: PBS containing 0.09% sodium azide.

Note: This product is for research use only.

For Reference Only