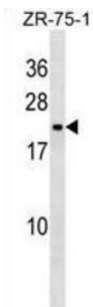


Putative STAG3-Like Protein 1 (STAG3L1) Antibody

Catalogue No.: abx030760



The function of this protein remains unknown.

Target:	Putative STAG3-Like Protein 1 (STAG3L1)
Clonality:	Polyclonal
Reactivity:	Human
Tested Applications:	ELISA, WB
Host:	Rabbit
Recommended dilutions:	WB: 1/2000. Optimal dilutions/concentrations should be determined by the end user.
Conjugation:	Unconjugated
Immunogen:	KLH-conjugated synthetic peptide between 108-136 amino acids from the Central region of human STAG3L1.
Isotype:	IgG
Form:	Liquid
Purification:	Purified through a protein A column, followed by peptide affinity purification.
Storage:	Aliquot and store at -20°C. Avoid repeated freeze/thaw cycles.
UniProt Primary AC:	P0CL83 (UniProt , ExpASY)
Molecular Weight:	Calculated MW: 23.8 kDa
Buffer:	PBS containing 0.09% sodium azide.

Datasheet

Version: 2.0.0

Revision date: 16 Nov 2024



Note: This product is for research use only.

For Reference Only