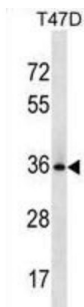


Bcl-2-Like Protein 12 (BCL2L12) Antibody

Catalogue No.: abx030793



The protein encoded by this gene belongs to the BCL-2 protein family. BCL-2 family members form hetero or homodimers and act as anti or pro-apoptotic regulators that are involved in a wide variety of cellular activities. This protein contains a Bcl-2 homology domain 2 (BH2). The function of this gene has not yet been determined. Two alternatively spliced transcript variants of this gene encoding distinct isoforms have been reported. [provided by RefSeq].

Target:	Bcl-2-Like Protein 12 (BCL2L12)
Clonality:	Polyclonal
Reactivity:	Human
Tested Applications:	ELISA, WB
Host:	Rabbit
Recommended dilutions:	WB: 1/1000. Optimal dilutions/concentrations should be determined by the end user.
Conjugation:	Unconjugated
Immunogen:	KLH-conjugated synthetic peptide between 19-45 amino acids from the N-terminal region of human BCL2L12.
Isotype:	IgG
Form:	Liquid
Purification:	Purified through a protein A column, followed by peptide affinity purification.
Storage:	Aliquot and store at -20°C. Avoid repeated freeze/thaw cycles.
UniProt Primary AC:	Q9HB09 (UniProt , ExPASy)
Gene Symbol:	BCL2L12

Datasheet

Version: 2.0.0
Revision date: 23 Feb 2025



String: [9606.ENSF00000482218](#)

Molecular Weight: Calculated MW: 36.8 kDa

Buffer: PBS containing 0.09% sodium azide.

Note: This product is for research use only.

For Reference Only